

Online Profile

## *Rubroshorea selanica*

(Red Meranti)

Farah Kamila, Hawa Ramadina, Danik Septianingrum, Aulia Ulfa, Nurah Anggraeni, Muhammad Hisyam Fadhil, Wahyu Hendrawan, Anggi Dwi Cahya Putri

Corresponding Author

[kamilanuraini@apps.ipb.ac.id](mailto:kamilanuraini@apps.ipb.ac.id)

### CONSERVATION STATUS

#### IUCN RedList

Vulnerable (2022)

#### CITES

This species is not listed in the CITES Appendices

#### Government of Indonesia

Not Protected (Regulation of the Minister of Forestry Number 106 of 2018)



### OVERALL DISTRIBUTION

Indonesia, Myanmar—Thailand, Malaysia.

### OVERVIEW

*Rubroshorea selanica* is a towering deciduous tree from the family Dipterocarpaceae, native to Southeast Asia. Reaching heights of up to 58 meters, its impressive stature is an iconic characteristic. Beyond its crucial role in the ecosystem, this species, also known as "Meranti Bapak," is one of the most sought-after timber products in the global tropical timber industry (Hayuningsih and Utomo 2020).

#### Citation

Kamila F, Ramadina H, Septianingrum D, Ulfa A, Anggraeni N, Fadhil MH, Hendrawan W, Putri ADC. 2025. Indonesia Species Profile of *Rubroshorea selanica* (Malvales: Dipterocarpaceae). *SSRS INABIODIV Species Profile and Information*. Vol.1: No. 0005. <https://publishing.ssrs.or.id/ojs/index.php/ssrs-inabiodiv>

#### Author affiliation:

IPB Sustainable Science Research Students Association - IPB University (KPE, FU, DS, AU, NA, MHF); Undergraduate Student in Department of Biology - IPB University (KPE, FU, DS, AU); SSRS Indonesia Biodiversity Hub (DS, AU, NA, MHF); Graduate Student in Department of Biology - IPB University (MHF); Center for Forest Sustainability – Ministry of Forestry (WH, ADCP)

## IDENTITY

### Scientific Name

*Rubroshorea selanica* P.S.Ashton & J.Heck

### Synonym

*Sorhea selanica* (Valmont) P.S.Ashton & J.Heck

*Unona selanica* (Valmont)

*Xylopiya orientalis* Spreng

*Dammara selanica* Valmont

*Hopea selanica* Wight & Arn

*Engelhardia selanica* (Valmont) Blume

*Shorea selanica* (Valmont) Blume

### Common Name (Indonesia)

Meranti Bapak, Meranti Maluku

### Indonesia Local Name

Biahut, Sehu, Kayu Bapak

## CLASSIFICATION

Kingdom	:	Plantae
Division	:	Magnoliophyta
Class	:	Magnoliopsida
Order	:	Malvales
Family	:	Dipterocarpaceae
Genus	:	<i>Rubroshorea</i>
Species	:	<i>Rubroshorea selanica</i>

## DESCRIPTION

Terrestrial plants, large tree with height up to 15 meters. The stem is cylindrical, erect and straight, becoming more grooved and textured with age, dark greyish brown in colour with a measured diameter of up to 58.92 cm, depending on the age of the tree, and has an internode length of 1-3.1 cm. Leaves are simple, the base is subcordate, asymmetrical, rounded, and obtuse, while the apex is acuminate and acute with entire margins, the branches are alternate and distichous, with ovate, elliptical, and oblong laminae measuring 9.8–18 cm in length and 4.6–7.2 cm in width, the leaves are stipulate and petiolate, with clearly visible pinnately veined venation, the upper surface of the leaf is shiny light green, indumentous, and sometimes has yellowish-white spots, while the underside is a paler yellowish-green with a smooth texture, rough along the veins; The petiole is 0.7–1 cm long; and the stipules are greenish-brown, 0.6–0.8 cm long and 0.5 cm wide.

## ECOLOGY AND HABITAT

*Rubroshorea selanica* grows in lowland forests, hilly slopes, well-drained soils such as cambisols covered with shrubs (Solissa *et al.* 2023), fairly high soil moisture conditions with moderate light (65% shade provides the best growth (Panjaitan *et al.* 2011)), temperature 29°-30°C and neutral soil pH.

## DISTRIBUTION

### Distirbution Region

Regional Distribution in Indonesia

Sulawesi Island, Maluku Island

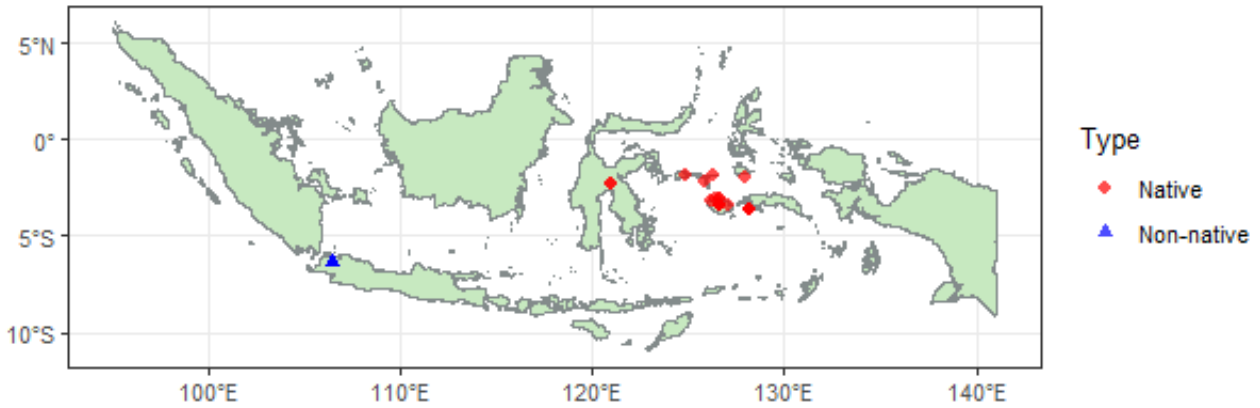
**Distribution Type**

Global

**Distribution Map**

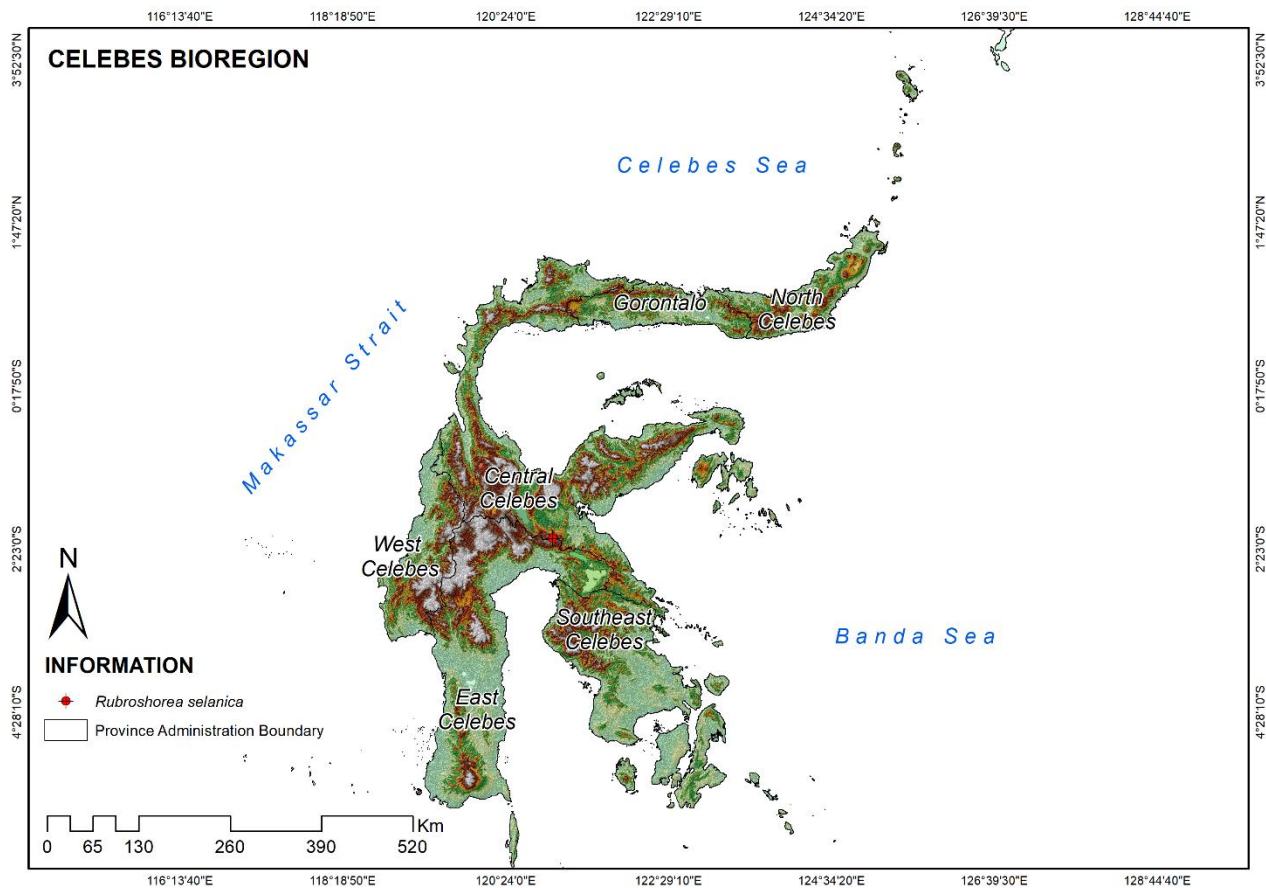
*Rubroshorea selanica* occurrence in Indonesia

Sumber data: GBIF



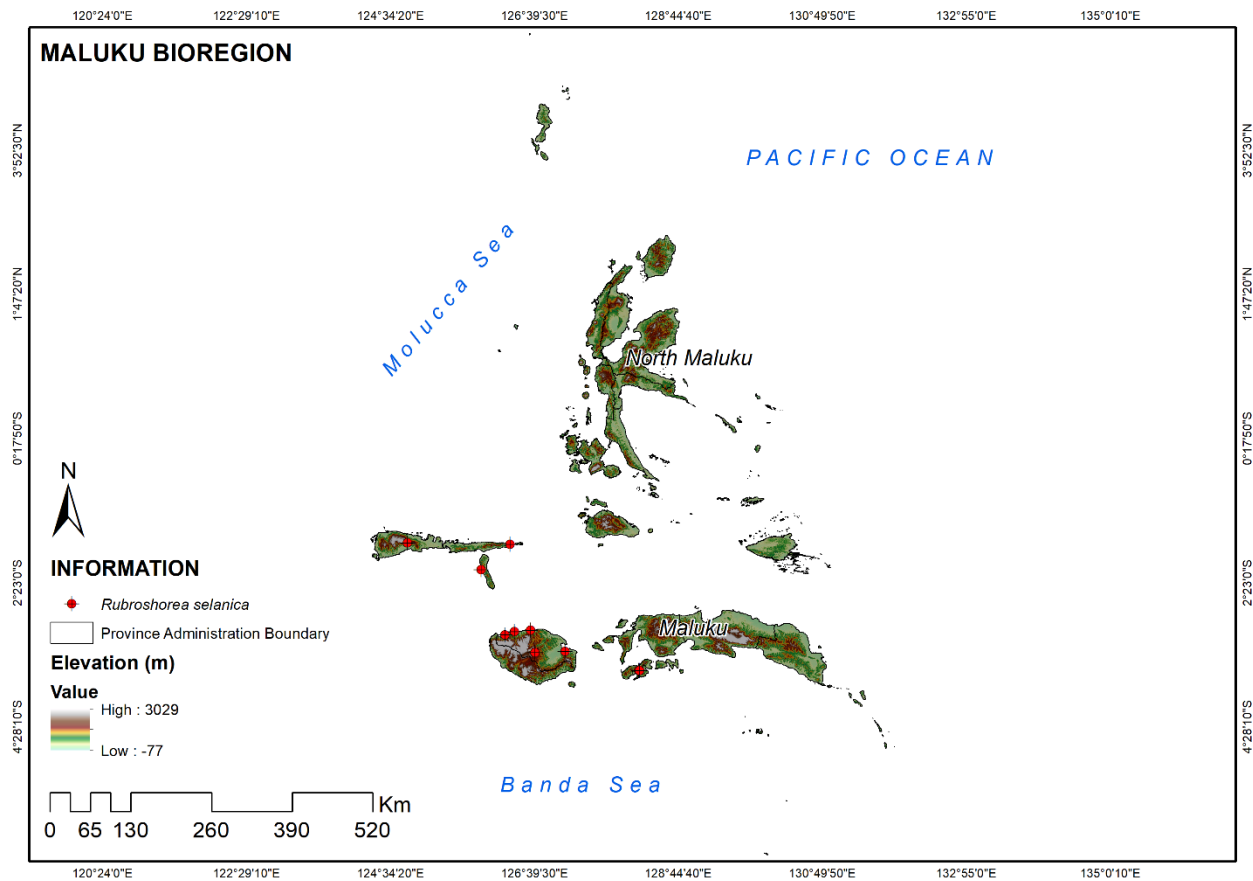
**Figure 1.** Distribution map *Rubroshorea selanica* in Indonesia by GBIF database

**Distribution Map Based on Indonesia Bioregion – Celebes**



**Figure 2.** Distribution map *Rubroshorea selanica* in Sumatra bioregion

## Distribution Map Based on Indonesia Bioregion – Maluku



**Figure 3.** Distribution map *Rubroshorea selanica* in Maluku bioregion

## SPECIES VALUE

### Ecological Value

Provides habitat for various species such as insects, birds and mammals. In addition to providing shelter, its dense canopy plays an important role in carbon sequestration, which affects climate change.

### Economic Value

Highly sought after in the local and national timber industry.



### Socio-Cultural Value



Not identified.

## THREATS

Agriculture, Forest Plantation, and Forest Logging

**DOCUMENTATION**

Picture	Title	Caption
	<p>Tree and stem</p>	<p><i>Rubroshorea selanica</i>, Meranti Research Forest, Mount Dahu, Leuwiliang District, West Java. 29<sup>th</sup> May, 2025.</p>
	<p>Adaxial leaves</p>	<p><i>Rubroshorea selanica</i>, Meranti Research Forest, Mount Dahu, Leuwiliang District, West Java. 29<sup>th</sup> May, 2025.</p>

		<p>Abaxial leaves</p>	<p><i>Rubroshorea selanica</i>, Meranti Research Forest, Mount Dahu, Leuwiliang District, West Java. 29<sup>th</sup> May, 2025.</p>
		<p>Stipule</p>	<p><i>Rubroshorea selanica</i>, Meranti Research Forest, Mount Dahu, Leuwiliang District, West Java. 29<sup>th</sup> May, 2025</p>

## REFERENCES

- Hayuningsih CW, Utomo S. 2020. Penilaian kesehatan dan pertumbuhan *Shorea selanica* (DC) Blume di hutan rakyat Desa Kepuharjo, Kecamatan Cangkringan, Sleman, Yogyakarta. Tugas Akhir, Universitas Gadjah Mada. [diakses 7 Agu 2025]. URL: <http://etd.repository.ugm.ac.id/>.
- Kusumadewi Y, Robiansyah I, Kusuma YWCK, Hamidi A, Rachmat HH, Randi A. 2023. *Shorea selanica*.
- The IUCN Red List of Threatened Species 2023: e.T33146A125627493. doi: 10.2305/IUCN.UK.20231.RLTS.T33146A125627493.en.
- Panjaitan S, Wahyuningtyas RS, Ambarwati D. 2011. Pengaruh naungan terhadap proses ekofisiologi dan pertumbuhan semai *Shorea selanica* (DC.) Blume di persemaian. *Jurnal Penelitian Dipterocarpa*. 5(2).
- Royal Botanic Gardens, Kew. 2025. *Rubroshorea selanica* (Valmont) P.S.Ashton & J.Heck. Plants of the World Online. [diakses 7 Agu 2025]. URL: <https://powo.science.kew.org/taxon/urn:lsid:ipni.org:names:77298335-1>
- Soerianegara I, Lemmens RHMJ. 1994. Plant Resources of South East Asia 5: Timber Trees: Major Commercial Timbers. Bogor: PROSEA.
- Shorea selanica*. Botanical Realm. [diakses 7 Agu 2025]. URL: <https://www.botanicalrealm.com/plant-identification/shorea-selanica/>.
- Solissa R, Siahaya L, Aponno HSES. 2023. Studi habitat meranti merah (*Shorea selanica* B.L) di Desa Oki Lama Kecamatan Namrole Kabupaten Buru Selatan. *MAKILA: Jurnal Penelitian Kehutanan*. 17(1): 68-82. DOI: <http://doi.org/10.30598/makila.v17i1.8946>.

Powered by



**biodiversitas  
Indonesia**  
SSRS INDONESIA BIODIVERSITY HUB  
part of SSRS Institute

**SSRS INDONESIA BIODIVERSITY HUB**

Building of SSRS Institute Head Office,  
Ciampea District, Bogor Regency, West Java Province, Indonesia  
Email: [info@biodiversitas-indonesia.or.id](mailto:info@biodiversitas-indonesia.or.id)  
website: [biodiversitas-indonesia.or.id](http://biodiversitas-indonesia.or.id)

Published by



**SSRS PUBLISHING** (Business Holdings of SSRS Group)

Building of SSRS Group Indonesia,  
Ciampea District, Bogor Regency, West Java Province, Indonesia  
Email: [publishing@ssrs.or.id](mailto:publishing@ssrs.or.id), [publishing@ssrs.or.id](mailto:publishing@ssrs.or.id)  
Website: [publishing.ssrs.or.id/ojs](http://publishing.ssrs.or.id/ojs),