

[Online Profile](#)

Rubroshorea pinanga

(Light Red Meranti)

Roni Andripan, Raihan Abhinaya Iskandar, Danik Septianingrum, Wahyu Hendrawan, Anggi Dwi Cahya Putri, Aulia Ulfa, Nurah Anggraeni, Muhammad Hisyam Fadhil

Corresponding Author

roniandripan@apps.ipb.ac.id

CONSERVATION STATUS

IUCN RedList

Least Concern (2019)

CITES

This species is not listed in the CITES Appendices

Government of Indonesia

Not Protected (Regulation of the Minister of Forestry Number 106 of 2018)



OVERALL DISTRIBUTION

Indonesia

OVERVIEW

Rubroshorea pinanga is an endemic species of the *Rubroshorea* genus with high ecological and economic value. Its seeds can be processed into vegetable oil, which is often used in the cosmetics, food, and pharmaceutical industries. This tree's existence is increasingly threatened by deforestation, illegal logging, and land conversion.

Citation

Andripan R, Iskandar RA, Septianingrum D, Ulfa A, Anggraeni N, Fadhil MH, Hendrawan W, Putri ADC. 2025. Indonesia Species Profile of *Rubroshorea pinanga* (Malvales: Dipterocarpaceae). *SSRS INABIODIV Species Profile and Information*. Vol.1: No. 0002. <https://publishing.ssrs.or.id/ojs/index.php/ssrs-inabiodiv>

Author affiliation:

IPB Sustainable Science Research Students Association - IPB University (KPE, FU, DS, AU, NA, MHF); Undergraduate Student in Department of Bioinformatics (RA); Undergraduate Student in Department of Biology - IPB University (RAI, DS, AU); Graduate Student in Department of Biology - IPB University (MHF); SSRS Indonesia Biodiversity Hub (DS, AU, NA, MHF); Center for Forest Sustainability – Ministry of Forestry (WH, ADCP).

IDENTITY

Scientific Name

Rubroshorea pinanga (Scheff.) P.S. Ashton & J. Heck.

Synonym

Shorea pinanga Scheff.

Shorea compressa Burck

Common Name (Indonesia)

Meranti Merah

Indonesia Local Name

Langgai, Engkabang Bukit, Tengkawang rambai, Tengkawang telur, Tengkawang telaga, Tengkawang minggi, Awang lanying

CLASSIFICATION

Kingdom	:	Plantae
Division	:	Magnoliophyta
Class	:	Magnoliopsida
Order	:	Malvales
Family	:	Dipterocarpaceae
Genus	:	<i>Rubroshorea</i>
Species	:	<i>Rubroshorea pinanga</i>

DESCRIPTION

Medium to large tree, up to 60 m tall, open crown, spreading branches, ascending at the base and drooping at the tips, leaf clusters clearly visible. Cylindrical stem, 19-37 cm in diameter, internodes 4-9 cm long. The bark is smooth and peeling, pale pinkish brown, with ridges, small orange lenticels, thin outer bark, inner bark can reach 1 cm and is pinkish brown or pale yellowish brown in the cambium. Lamina is lanceolate (Lindley), base subcordate, tip acute, margin entire, leaf attachment type petiolate, arranged alternately, venation is camptodromous, adaxial texture coriaceous, abaxial texture papyraceous. Indeterminate flower arrangement, dark pink in color, 15 stamens. The fruit is turbinate-shaped, samara-type, there are 3 fruit wings, 22-28 cm long and 2.5-3.5 cm wide, and 2 short wings, 8-17 cm long and 0.8-1.4 cm wide. The seeds are round and egg-shaped, 34-53 x 25-28 mm in diameter, generally approximately the same length and width, namely around 2.3 cm (Maharani *et al.* 2013).

ECOLOGY AND HABITAT

Rubroshorea pinanga is endemic to Borneo. It is native to Brunei, Kalimantan, Sabah and Sarawak, the species is well distributed across all of Borneo within an extent of occurrence of at least 660,000 km² (Robiansyah *et al.* 2019). This species usually grows on ridges below 700 meters above sea level (Maharani *et al.* 2013).

DISTRIBUTION

Distribution Region

Regional Distribution in Indonesia

Kalimantan Island

Distribution Type

Endemic

Distribution Map

Rubroshorea pinanga occurrence in Indonesia

Sumber data: GBIF

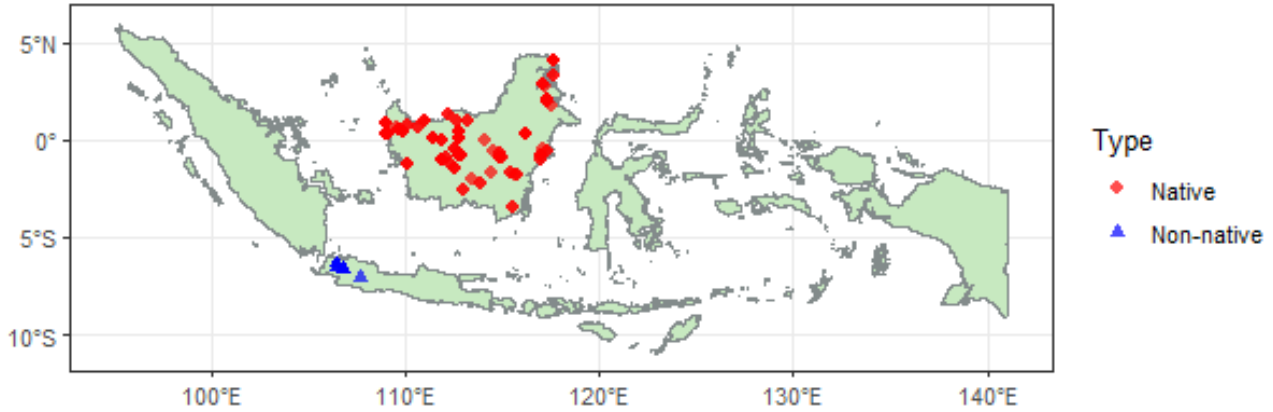


Figure 1. Distribution map *Rubroshorea pinanga* in Indonesia by GBIF data

Distribution Map Based on Indonesia Bioregion – Borneo

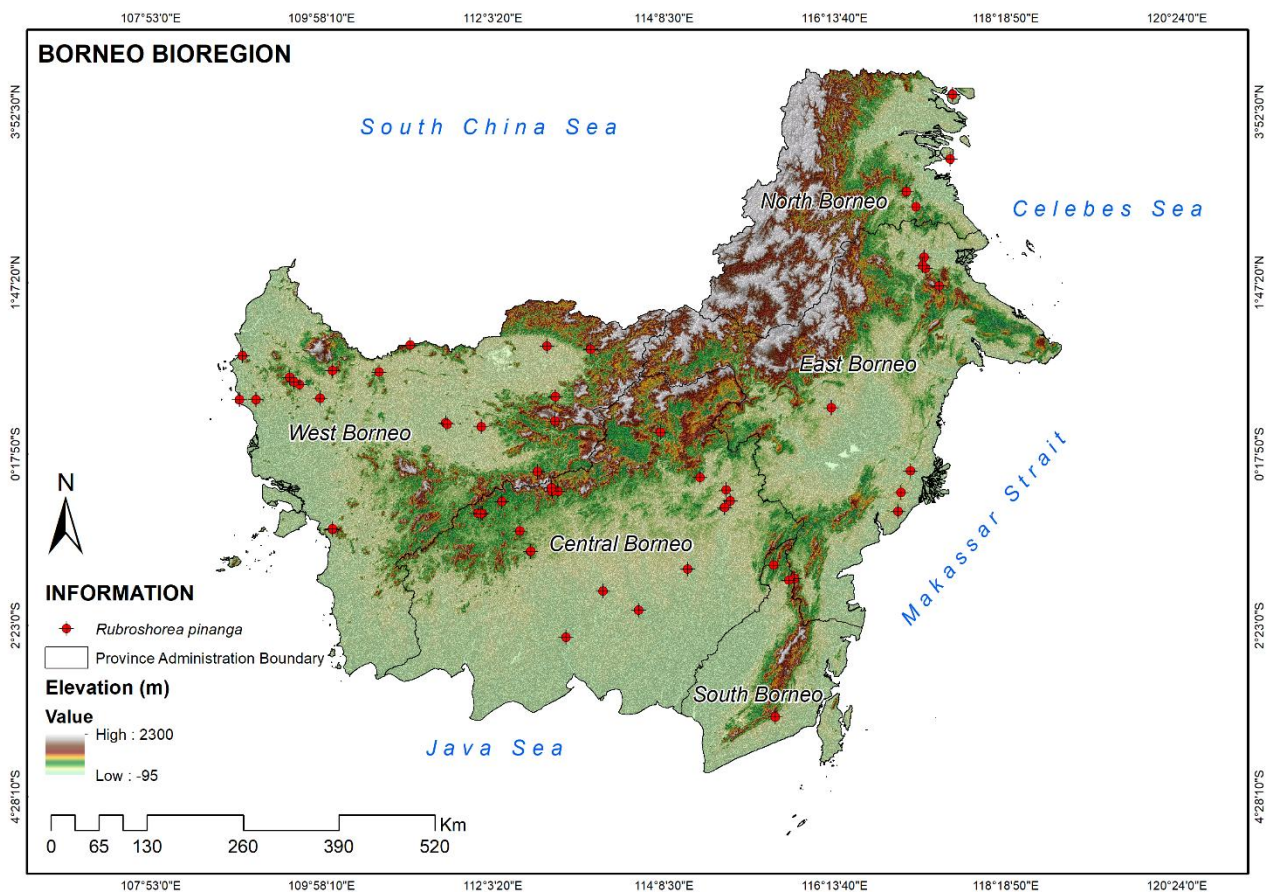


Figure 2. Distribution map *Rubroshorea pinanga* in Borneo bioregion

SPECIES VALUE

Ecological Value

Not identified

Economic Value

Rubroshorea pinanga is used for timber traded under the name light red meranti. The timber is used as a construction material (Robiansyah *et al.* 2019). The seeds can also be processed into vegetable oil, used in the cosmetics, food and pharmaceutical industries (Putir *et al.* 2024).



Socio-Cultural Value




Not identified


THREATS

Agriculture, Forest Plantation, and Forest Logging

DOCUMENTATION

Picture	Title	Caption
	<p>Fruit</p>	<p><i>Rubroshorea pinanga</i>, Meranti Research Forest, Mount Dahu, Leuwiliang District, Bogor Regency, West Java. 29th May, 2025.</p>
	<p>Bark</p>	<p><i>Rubroshorea pinanga</i>, Meranti Research Forest, Mount Dahu, Leuwiliang District, Bogor Regency, West Java. 29th May, 2025.</p>

	<p>Adaxial leaves</p>	<p><i>Rubroshorea pinanga</i>, Meranti Research Forest, Mount Dahu, Leuwiliang District, Bogor Regency, West Java. 29th May, 2025.</p>
	<p>Stipules</p>	<p><i>Rubroshorea pinanga</i>, Meranti Research Forest, Mount Dahu, Leuwiliang District, Bogor Regency, West Java. 29th May, 2025.</p>
	<p>Canopy tree</p>	<p><i>Rubroshorea pinanga</i>, Meranti Research Forest, Mount Dahu, Leuwiliang District, Bogor Regency, West Java. 29th May, 2025.</p>

	<p>Leaf venation</p>	<p><i>Rubroshorea pinanga</i>, Meranti Research Forest, Mount Dahu, Leuwiliang District, Bogor Regency, West Java. 29th May, 2025.</p>
---	----------------------	---

REFERENCES

- Maharani, Handayani P, Hardjana AK. 2013. *Panduan Identifikasi Jenis Pohon Tengkawang*. Balai Besar Penelitian Dipterokarpa, Badan Penelitian dan Pengembangan Kehutanan, Departemen Kehutanan, Indonesia. Kade Sidiyasa, editor. Samarinda
- Putir PE, Madiyawati M, Sampang, Agatha HA, Meidalena C. 2024. Respon pertumbuhan tengkawang (*Shorea pinanga* Scheff) terhadap pemberian pupuk organik cair (POC) di persemaian. *HUTAN Trop*. 19(2):436–445. doi:10.36873/jht.v19i2.18597.
- Robiansyah I, Kusumadewi Y, Julia S, Randi A, Hoo PK, Khoo E, Maycock CR. 2019. *Shorea pinanga*. The IUCN Red List of Threatened Species 2019: e.T36343A125630011. doi:10.2305/IUCN.UK.2019-3.RLTS.T36343A125630011.en

Powered by



**biodiversitas
Indonesia**
SSRS INDONESIA BIODIVERSITY HUB
part of SSRS Institute

SSRS INDONESIA BIODIVERSITY HUB

Building of SSRS Institute Head Office,
Ciampea District, Bogor Regency, West Java Province, Indonesia
Email: info@biodiversitas-indonesia.or.id
website: biodiversitas-indonesia.or.id

Published by



SSRS PUBLISHING (Business Holdings of SSRS Group)

Building of SSRS Group Indonesia,
Ciampea District, Bogor Regency, West Java Province, Indonesia
Email: publishing@ssrs.or.id, publishing@ssrs.or.id
Website: publishing.ssrs.or.id/ojs,